



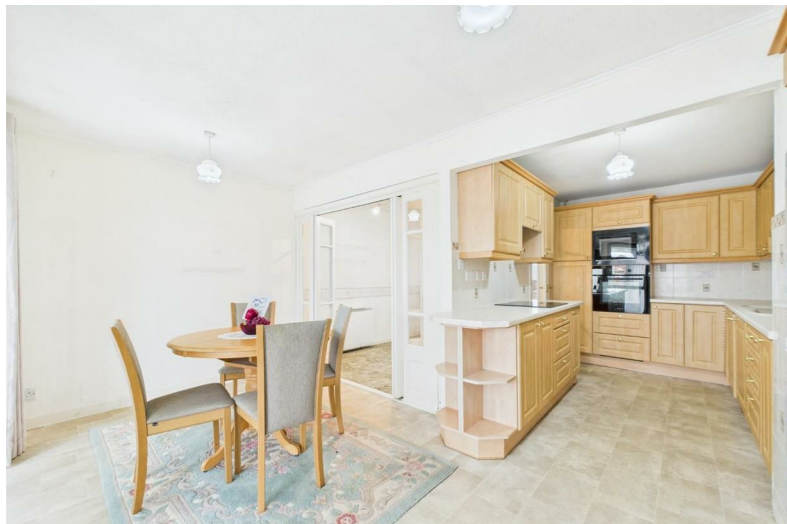
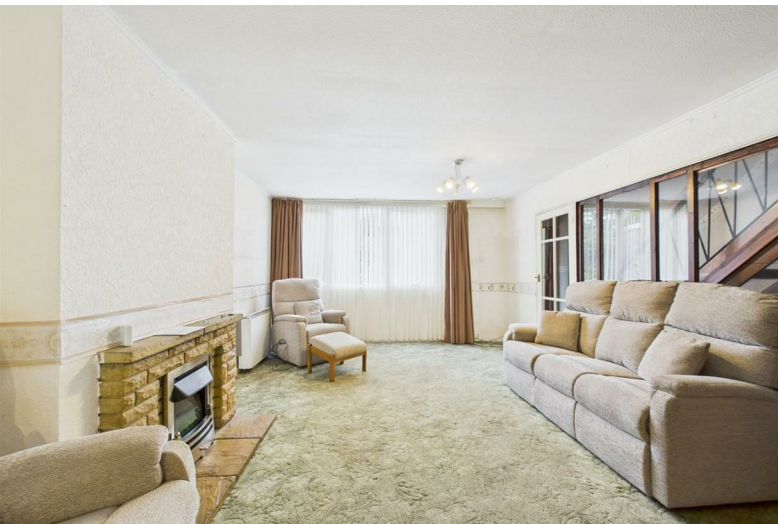
10 Long Meadow

Stapleton, Bristol, BS16 1DY

**Offers in excess of  
£285,000**



# 10 Long Meadow



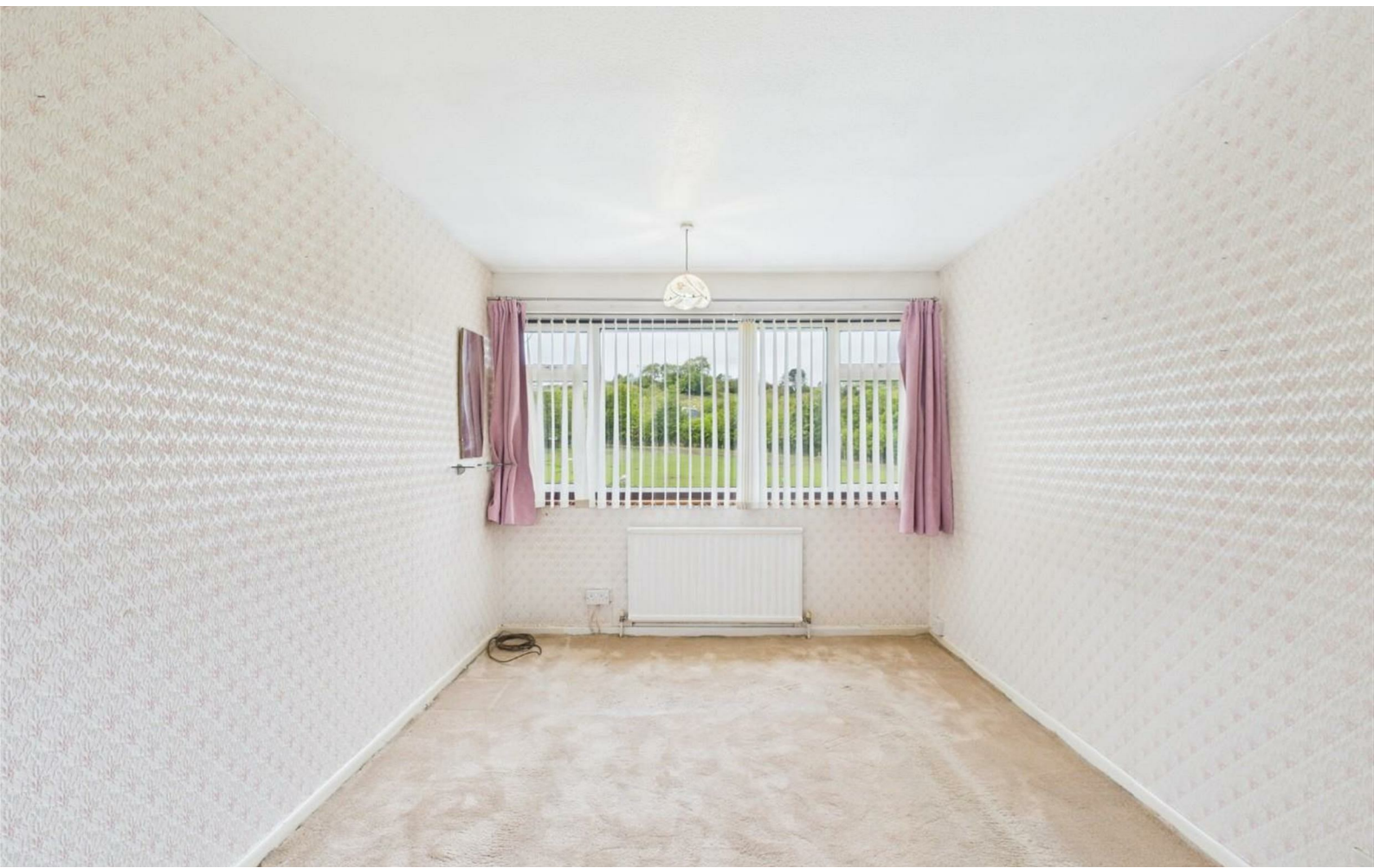
## Description

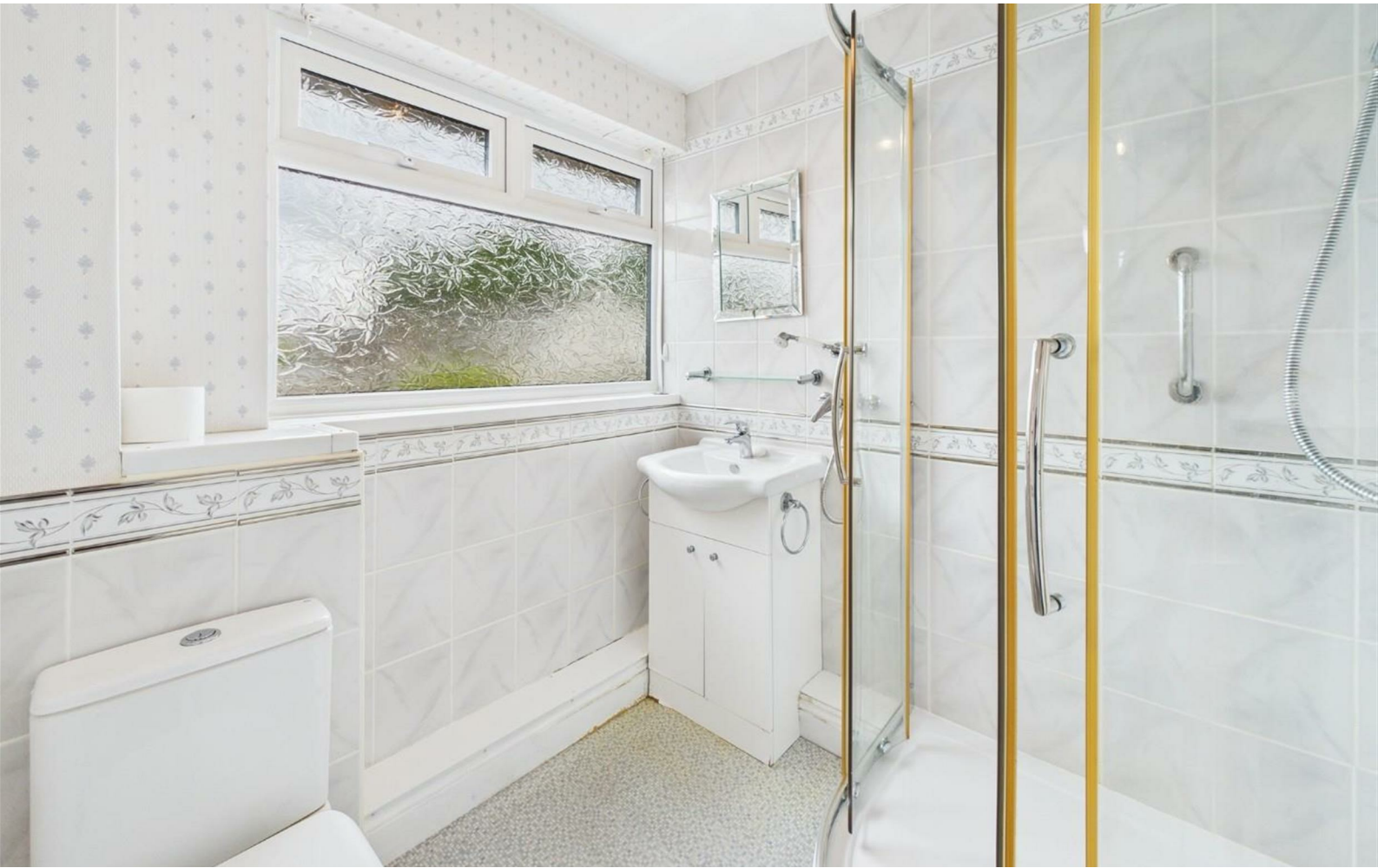
Welcome to this 1970s 3 bedroom terraced home nestled away in Stapleton and only a stones throw away from local shops, schools and transport links. With no onward chain worries and a private garage, this property is ideal for first time buyers looking to put their own stamp on it.

Comprising of a porch leading to a spacious living room. The good-sized kitchen leads to the dining area. To the rear you'll find a conservatory, a garage and a well-maintained garden. Upstairs you'll find a two double bedrooms, a third single bedroom and a family bathroom.

Don't miss out on the opportunity of making this gem your own. Call now to book a viewing !!

- GARAGE
- 3 BEDROOMS
- SPACIOUS LIVING ROOM
- DINING ROOM
- NO CHAIN !!
- WELL-MAINTAINED GARDEN
- NEEDS UPDATING
- KITCHEN
- CONSERVATORY
- ELECTRIC HEATING

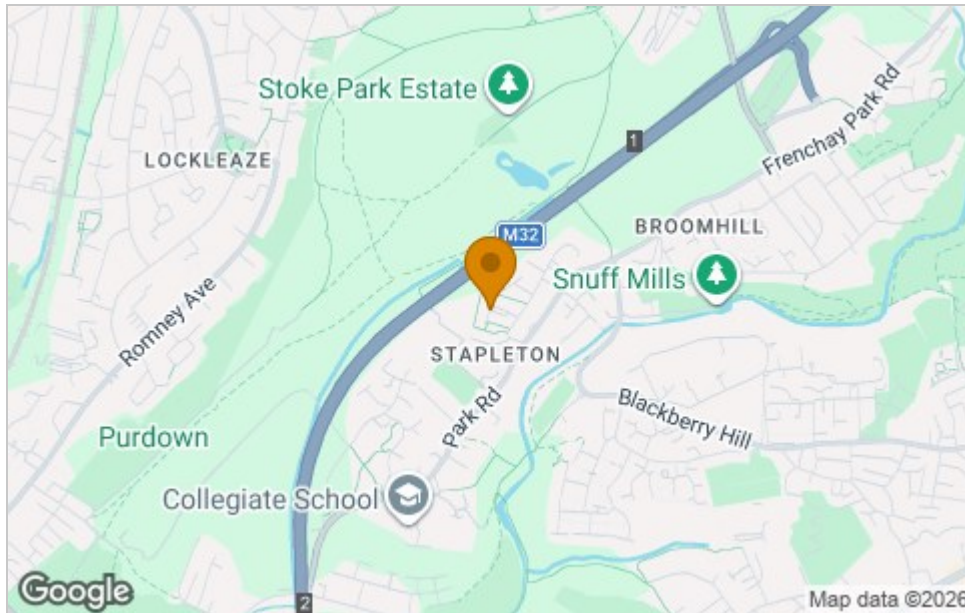




# Floor Plan



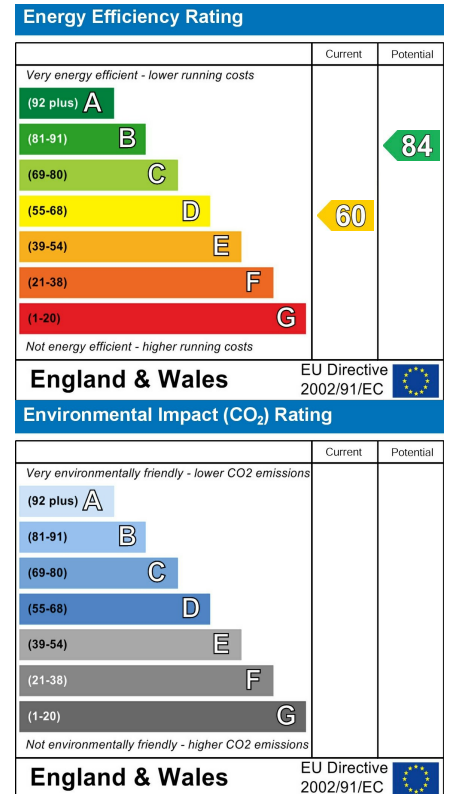
# Area Map



# Viewing

Please contact our House + Co Property (Sales) Office on 0117 907 0020 if you wish to arrange a viewing appointment for this property or require further information.

# Energy Efficiency Graph



These particulars, whilst believed to be accurate are set out as a general outline only for guidance and do not constitute any part of an offer or contract. Intending purchasers should not rely on them as statements of representation of fact, but must satisfy themselves by inspection or otherwise as to their accuracy. No person in this firm's employment has the authority to make or give any representation or warranty in respect of the property.